

You're AFWA Monthly Newsletter is here!



Accounting & Financial Women's Alliance
CONNECT • ADVANCE • LEAD
Mesa East Valley Chapter

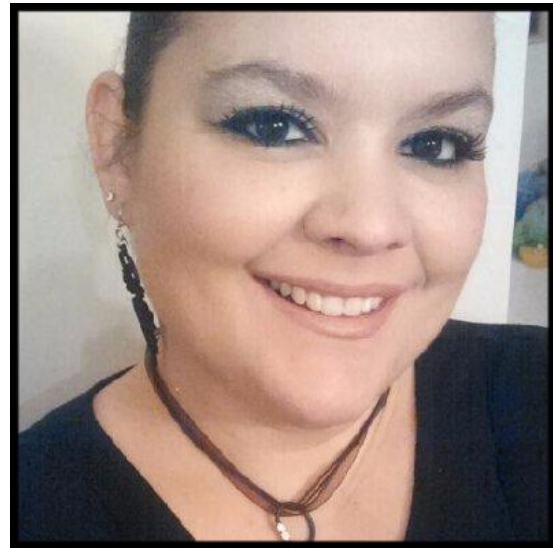
Mesa East Valley's IN TOUCH

[Register Here](#)

February 9th-
Public Speaking at [Dobson
Restaurant](#)
1 CPE

March 8th- 1 CPE @ Dobson
Restaurant

March 19th- [Heart Walk](#)



In this presentation [Stephanie Hoffman](#) will share insight into how to incorporate effective speech into everyday situations.



President's Corner with Deanna Schantel

Aligning our Chapter Goals with Your Personal Goals

I hope 2016 is off to a successful start for you. It's hard to believe we are one month in already. Have you kept up with your goals for the New Year? AFWA has opportunities to help you stay on track. We kicked off the year with our 2-hour CPE on tax updates at Macayos Depot Cantina with our popular speakers Amy Benesch from the State of Arizona and Lisa Novack with the IRS. These ladies (and a margarita or two) can make even tax updates fun. If staying current and building your professional skills are on your To Do list this year, we'll continue to help you earn your CPE hours all year with our regular meetings, referrals to some of our favorite external sources, national conferences and our local seminar. Look for registration to be open this week for our February 9th meeting to be held at Dobson Restaurant.

We also had our quarterly mentoring brunch in January which is a great way to stay accountable to your goals as well as receive candid input from fellow members. Our mentoring group is exclusive to members and provides a confidential forum to work on current situations in your professional life drawing on the diverse experience of our group. Watch for the next invitation in your email at the end of March.

Looking to take on a leadership position or get more involved in community service? We have begun the process of identifying qualified nominees for next year's chapter board of directors and welcome new committee members any time of year. A great way to get your feet wet is to join a committee and add your energy and ideas to our Community Service (walk with us in the March Heart Walk); Financial Literacy (join our planning sessions to teach youth groups in a game format), or Public Relations committees (represent our chapter at Mesa Chamber of Commerce events). You might even find that we reach out to you, if you have the skills we are looking for, we won't be shy about asking you to make a personal investment in your chapter and in your leadership skills.

Our priority this year is to provide you with opportunities to engage with chapter members and meet your personal development goals. One way we are supporting that goal is to hold most of our meetings at a regular venue, Dobson Restaurant, so you have one less thing to keep track of. We have a few fun things planned that work best at other locations, but we'll keep you up to date on any special venues. We are finalizing the schedule for the remainder of this fiscal year and will keep you informed by having the latest calendar in the newsletters so you have the information you need to start checking off your goals.

I look forward to seeing you at CPE meetings, mentoring brunches, fun events, community service and seminars over the year. If there is any way that I can be of service to you as you strive toward your professional best, please reach out to me.

STAY CONNECTED



PO Box 41294, Mesa, AZ 85274

[Unsubscribe](#)

[Update Profile](#) | [About our service provider](#)

Sent by afwamev@gmail.com in collaboration with

Constant Contact 

Try it free today